



Transition to Managed Care & Working within a DISCO Network

**OPWDD Session: November 15,
2013**

Presented by: Arthur Webb

The NYS field of care for Persons with Intellectual & Developmental Disabilities

Let's be clear:

- All of us should feel proud of the great accomplishments over the past 40 years.
- Social Justice was achieved.
- We have a very strong base to get us to the future.
- We now need a whole new commitment to change, innovation, and inspiration.

www.NYIN.org

[About](#) [NYIN Topics](#) [News](#) [Contact](#)



Welcome

to a new consortium of agencies
collaborating to improve care
for people with disabilities.



NYIN

***NEW YORK INTEGRATED NETWORK
FOR PERSONS WITH INTELLECTUAL
AND DEVELOPMENTAL DISABILITIES***

The Vision of NYIN: A Values-based Collaborative of Providers

Goals:

- ***Become a sustainable network within a high quality, integrated system***
- ***Support new and innovative models***
- ***Utilize best practices***
- ***Improve quality of life and services.***

NYIN: Value-based Managed Care

NYIN is driven by a simple idea that providers listening to and working with individuals & families can create and design a viable business model that works for everyone.

We hold to the ideals of choice, access, and quality of life

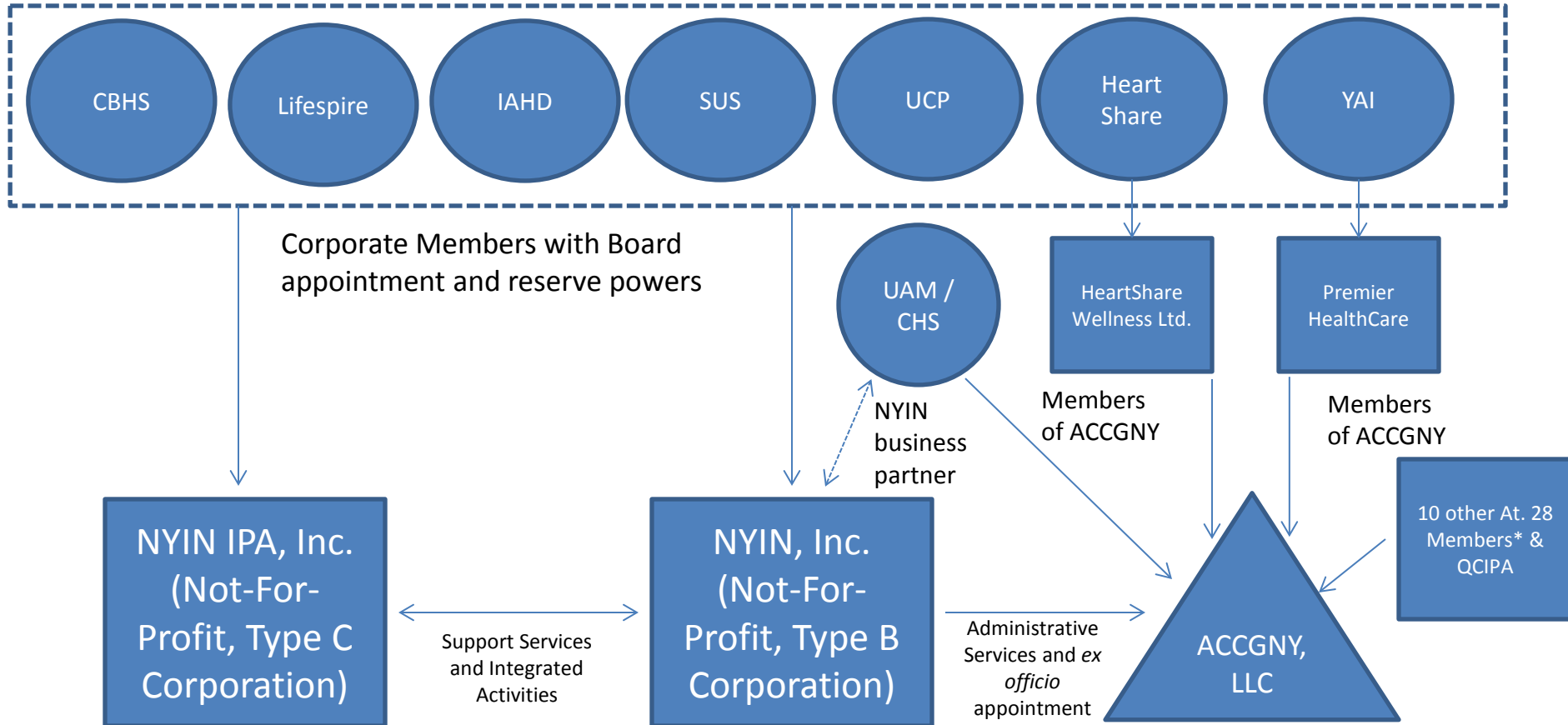
NYIN Sponsors

Governing Agency	Communities Served
Coordinated Behavioral Health Services (CBHS)*	Westchester, Mid-Hudson Region
HeartShare Human Services of New York	New York City
The Institutes for Applied Human Dynamics (IAHD)	New York City, Westchester
Lifespire	New York City, Lower-Hudson Region
Services for the UnderServed (SUS)	New York City
United Cerebral Palsy of NYC (UCP/NYC)	New York City
The Young Adult Institute (YAI)	New York City, New Jersey, Long Island, Mid-Hudson Region

* CBHS is a consortium which includes Abilities First, Crystal Run Village Inc., New Hope Community, Occupations Inc., and Westchester Jewish Community Services

Full Structure

Class A Members



Goals of NYIN

- ✓ ***Operating a DISCO***
- ✓ ***Operating an IPA***
- ✓ ***Operating an ACO***
- ✓ ***Building a first class primary care network***
- ✓ ***Leading the way on transformation***
 - ***Commitment to expanding self-direction***
 - ***Commitment to expanding employment***
 - ***Commitment to offering new residential models***
- ✓ ***Building innovative solutions to care***
- ✓ ***Achieving major efficiencies through collaboration***

Vision: Managing Care



How can we fully integrate the DISCO benefits?

First Step

Proposed DISCO Benefit Package

OPWDD Auspice Services	DOH Auspice Services	OMH/OASAS Auspice Services
<ul style="list-style-type: none"> • OPWDD Comprehensive Waiver Services • Day Treatment • ICF/IID • Art 16 Clinic Svcs: OT, PT, SLP, Clinical Social Work, Psychology, Nutrition, Rehab Counseling, Podiatry, and Dentistry. • Care Coordination provided by the DISCO 	<ul style="list-style-type: none"> • Adult Day Health Care • Dentistry • DME and Hearing AIDS • Home Care (offered under any auspice: hospital-based, nursing home-based, and free-standing programs) • Non Emergency Transportation • Optometry/Eyeglasses • OT, PT, SLP • Personal Care • Personal Emergency Response System • Private Duty Nursing • Psychology and Clinical Social Work • Respiratory Therapy • Skilled Nursing Facility • Podiatry 	<ul style="list-style-type: none"> • OASAS Inpatient • OMH Institutional Program (PC/RTF) & private psychiatric hospitalizations • Personal Recovery Oriented Services (PROS) • Outpatient – OMH, OASAS • Psychology and Clinical Social Work • OMH day treatment

Major Issues: Just a few issues to start the discussion

- The timing of the RFA/licensing
- The role of FIDA
- The role of OPWDD in eligibility and enrollment
- The actuarial base for rates/capitation
- The tool to assess needs, acuity and life plans
- The model of care coordination
- The model for outcome measurement

Thank you

NYIN stands ready and willing to fully participate in making DISCOs an effective model for quality of care and coordination of services to achieve a fully integrated system of care where access and choice are protected.