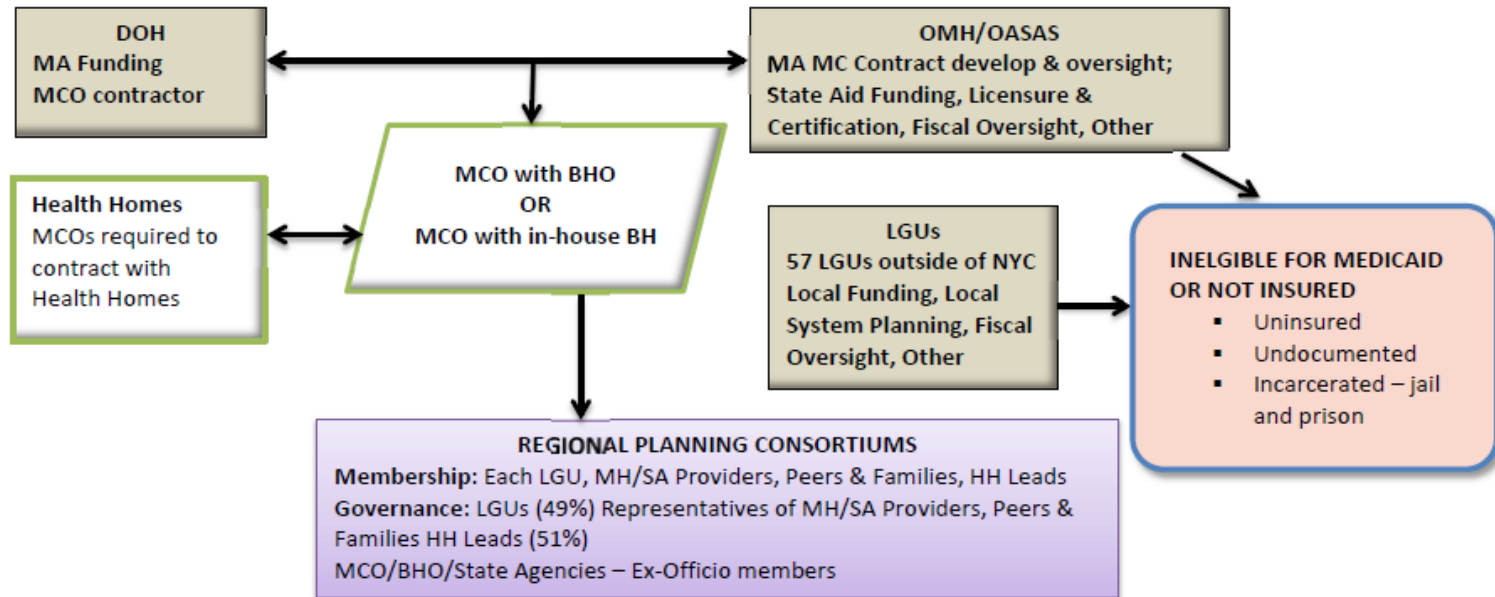


TECHNICAL ASSISTANCE PROJECT UPDATE: LGU DATA “DASHBOARD”

Goals, Process & Progress to Date

STRATEGIC CONTEXT: LGU ROLE

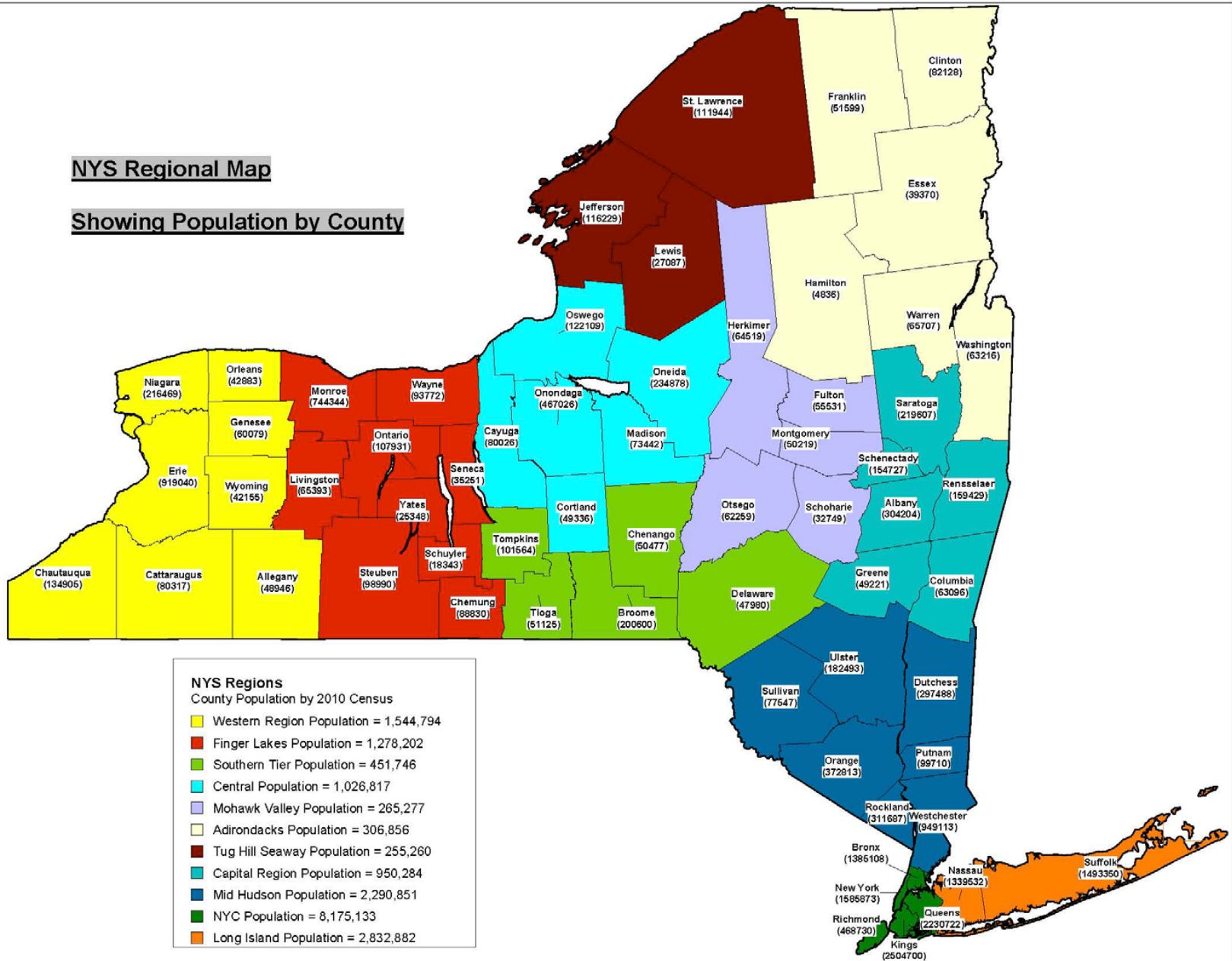
- Scott to pull slides from LGU role slide desk and insert here



- | | | | | | | | |
|---|--|---|---|---|--|--|--|
| WNY
Erie
Niagara
Orleans
Genesee
Wyoming
Chautauqua
Cattaraugus
Allegany | Finger Lakes
Monroe
Wayne
Livingston
Ontario
Yates
Seneca
Schuyler
Chemung
Steuben | Southern Tier
Tompkins
Tioga
Broome
Delaware
Chenango | Central
Cayuga
Oswego
Onondaga
Cortland
Madison
Oneida | Mohawk Valley
Fulton
Herkimer
Montgomery
Otsego
Schoharie | Tug Hill Seaway
Jefferson
Lewis
St. Lawrence | Adirondacks
Clinton
Essex
Franklin
Hamilton
Warren
Washington | Capital Region
Albany
Columbia
Greene
Saratoga
Schenectady
Rensselaer |
| Mid-Hudson
Dutchess Orange Putnam
Rockland Sullivan Ulster
Westchester | | | Long Island
Nassau Suffolk | | | | |

NYS Regional Map

Showing Population by County



IMPLICATIONS FOR PLANNING: FROM NOUN TO VERB



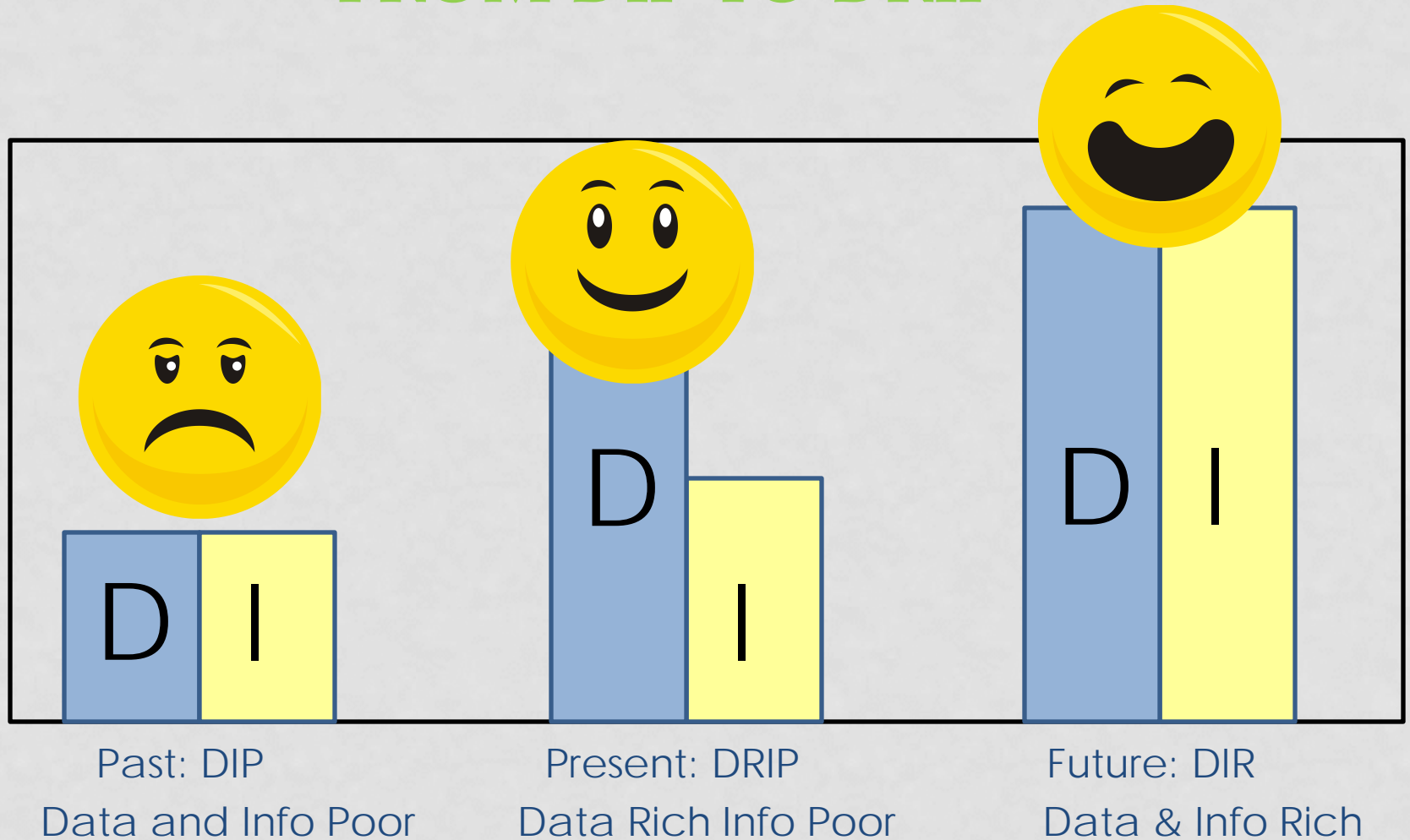
Required Annual Task

Ongoing Systems

Management

DATA DRIVEN SYSTEMS MANAGEMENT

FROM DIP TO DRIP



RAW VS CANNED

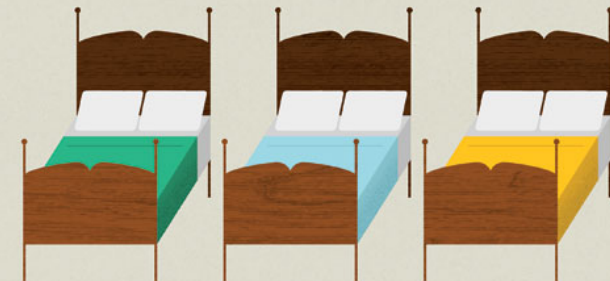
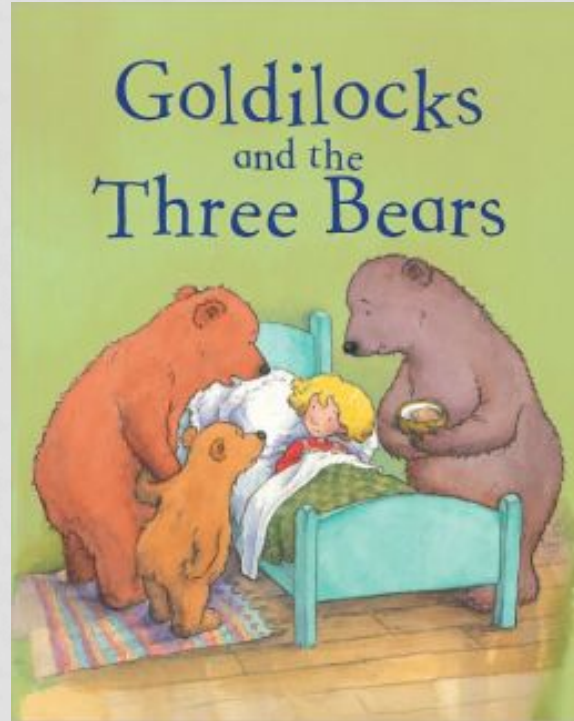
WHERE SHOULD WE DEDICATE OUR RESOURCES FOR SUPPORTING PLANNING EFFORTS?



Limited time/ resources



REGIONAL PLANNING: "JUST RIGHT"



PROJECT GOALS

- To support **meaningful behavioral health care planning and system oversight** at the local and regional levels, including:
 - The local impact of implementing managed care for all, health homes, and Medicaid redesign
 - Move to Regional Centers of Excellence for state-operated services

PROCESS

- Charged **Data Workgroup** with:
 - Defining areas where data are most needed to support local and regional planning and oversight (key system indicators)
 - Identifying potential data sources
 - Prioritizing areas for initial data acquisition
 - Balance importance with ease of access and availability
 - “Proof of Concept”

Assembling initial data views

Sharing initial development for review and refinement



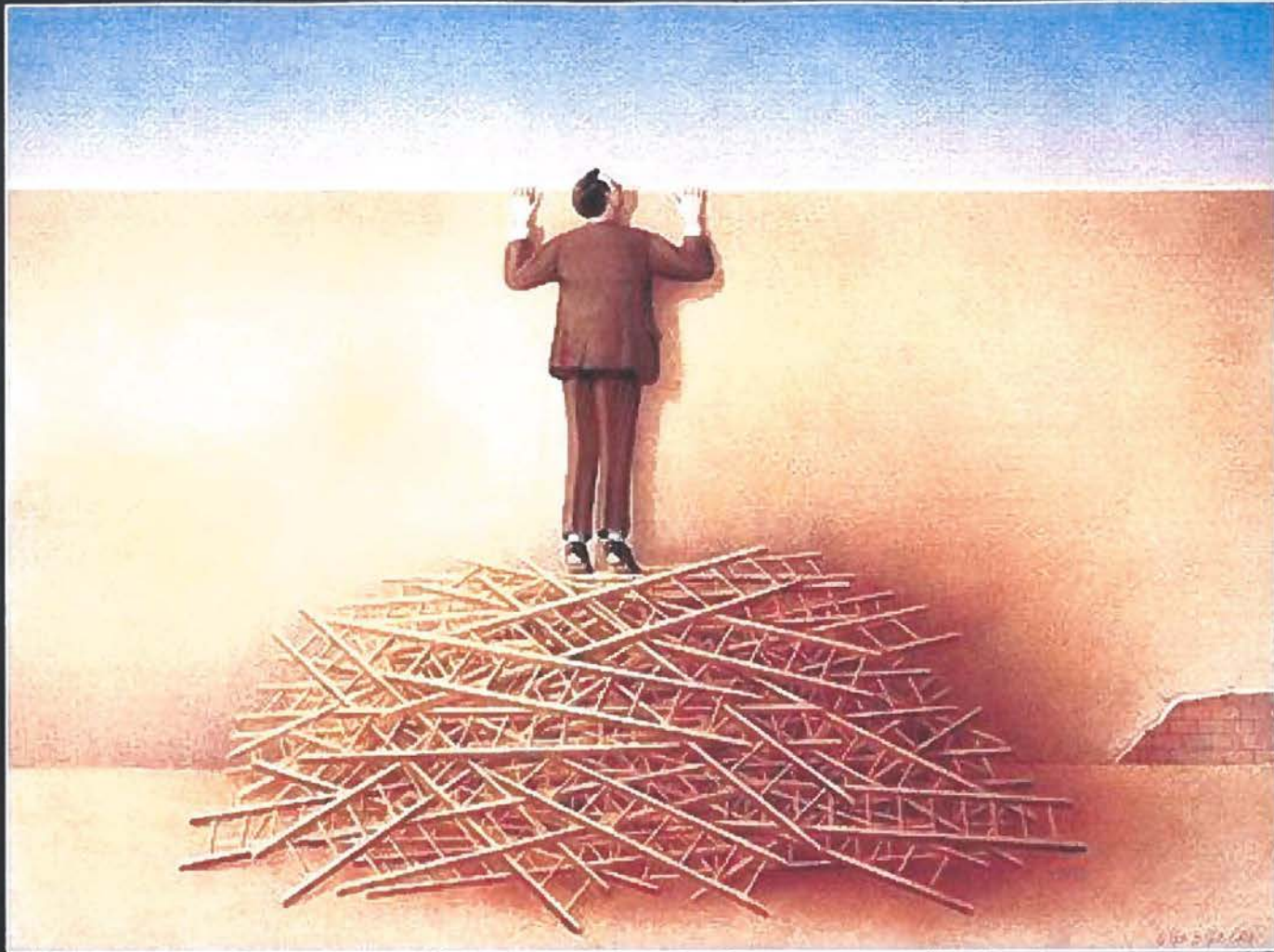
DATA WORKGROUP MEMBERS

- Deborah Goldman (Erie County) – Chair
 - Mat Roosa (Director, of Planning & Quality Improvement Onondaga County)
 - Rodney Corry (Director of Community Services, Livingston County)
 - Mandy Teeter (Mental Hygiene Administrator, Monroe County OMH)
 - Jackie Friedman, Psy.D (Health Homes & Care Coordination Specialist, NYC)
 - Kelly McMullen (Ulster County OMH)
 - Jean Audet (NYS OASAS)
 - Betsy Mulvey (CLMHD)
 - Consultants: Anne Wilder, Neilia Kelly (CCSI)

APPROACH / GUIDELINES

- Create a framework to support data-informed planning and monitoring
- Incorporate both state and local data sources
 - System should ultimately allow LGUs to “upload” local data so that they can be used in context and conjunction with state and other data sources
- Data views should be simple and concise
 - Use drill downs / supplemental analyses to explore specific issues in greater depth
- Data should be available at the county and regional levels

It doesn't matter how many resources you have.



If you don't know how to use them,
it will never be enough.

Estimated Need

How many residents are in need of behavioral health services?

Service Use Snapshot

How many residents are receiving behavioral health services – and what is being provided?

Use of Inpatient Care

How many residents are receiving care at the highest level?

Inpatient/Outpatient Transitions

Are those receiving inpatient care connected to outpatient services?

Health Home

Implementation & Impact

How many are eligible? How many are enrolled? What is the impact?

Criminal Justice System Interface

Physical Health Integration

What are the physical health needs of those individuals whom we serve? What services do they receive?

Employment

Achieving Health Equity

Housing

New / Emerging Populations

How many individuals will be newly insured and what services will they use?

Bolded text denotes system indicators that will be populated with data in this initial round. Lighter text denotes those that are “coming soon.”

DEMO: PREVIEW OF WORK IN PROGRESS

- Initial data sources
- Illustrations of local / regional utility

NEXT STEPS

- Finalize initial data views/supporting documentation
 - *Initial release to MH Planning Committee for final testing*
- Hold introductory webinar with CLMHD members
(*Target: by end of October*)
- Release initial version to CLMHD membership
- Refine as needed based on questions, feedback, etc.
- Determine priorities, scope, process for additional development (in concert with evolving state agency data portal plans)