



NYS CLMHD Developmental Disabilities Committee


June 25, 2013

Review of DD Committee Activities

- Re-Energized Counties
- Developed LGU Role Paper
- Disseminated paper to OPWDD leadership; DDRO/DDSOO and Provider Associations
- Established Information Sharing/Meetings
- Regular Committee Calls to Share Information

LGU Role Paper Highlights

- Renewed commitment to the LGU role and responsibility; Recognition of history; Articulated LGU value
- LGU should have a role in the review, selection and oversight of the Developmental Disabilities Individual Support and Care Coordination Organization's (DISCO) covering their county
- LGU and the DISCO should establish a formalized operational relationship

- 
- LGU will monitor the local impact of service delivery, accessibility and utilization of services, identify service gaps and needs and retain responsibility for understanding how OPWDD and other systems of care affect the local community, including forensic systems and courts, child welfare, etc. and leadership
 - LGU will work closely with OPWDD and DISCOS to ensure a safety net is maintained for those with complex, multi-system needs, those that do not have full OPWDD eligibility and those not insured through Medicaid

Building Support for the Paper Next Steps

Assurance of Support and Messaging-OPWDD

- Commissioner Burke
- Gerald Huber-(Division of Person Centered Supports) and other Deputy Commissioners
- Regional Meetings
 - DDRO & DDSOO
- Potential DISCOS

Assurance of Support and Messaging-Counties



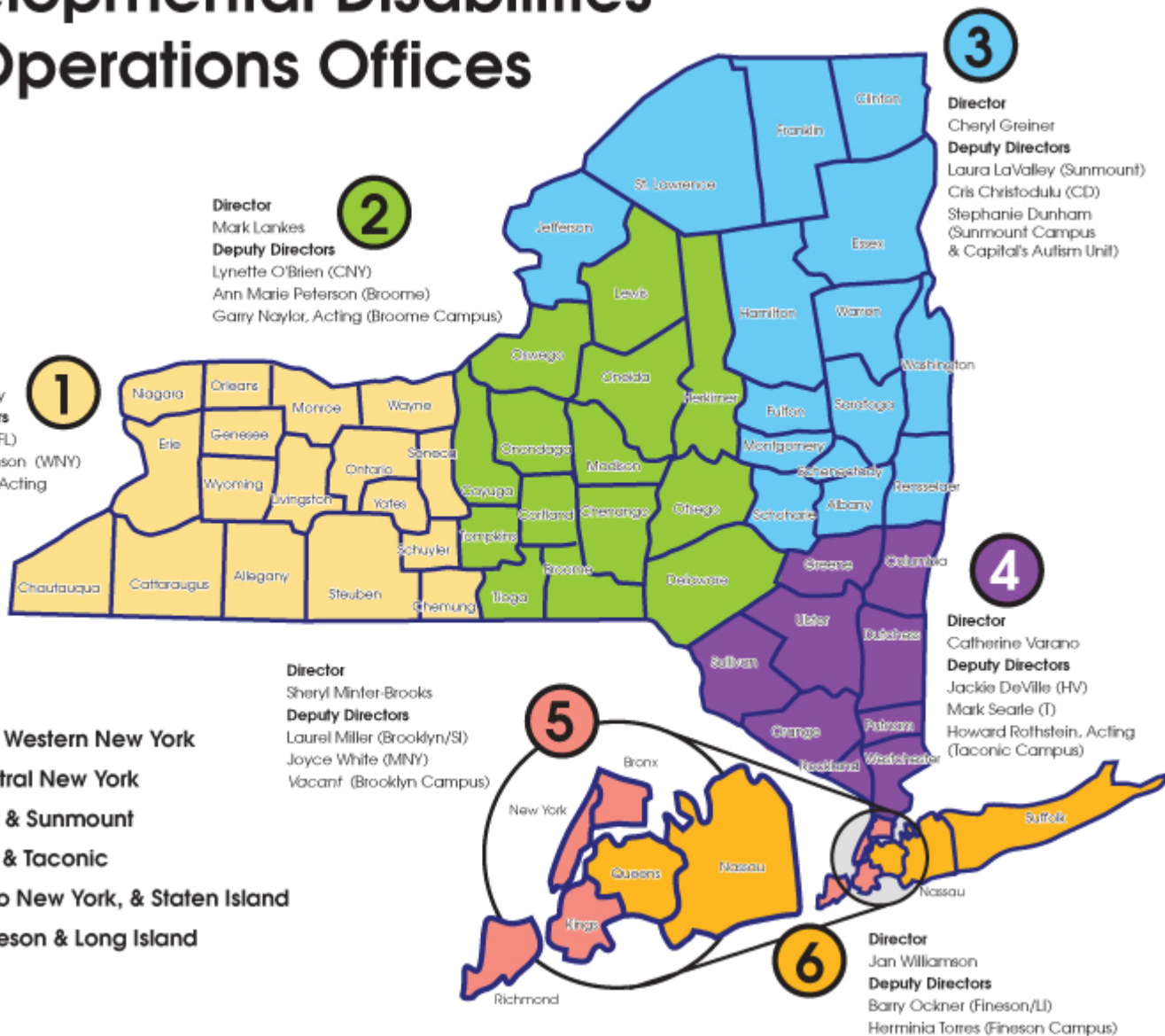
Other Important Issues Terms and Initiatives to be Aware of

LGU Knowledge and Readiness?

OPWDD Restructuring

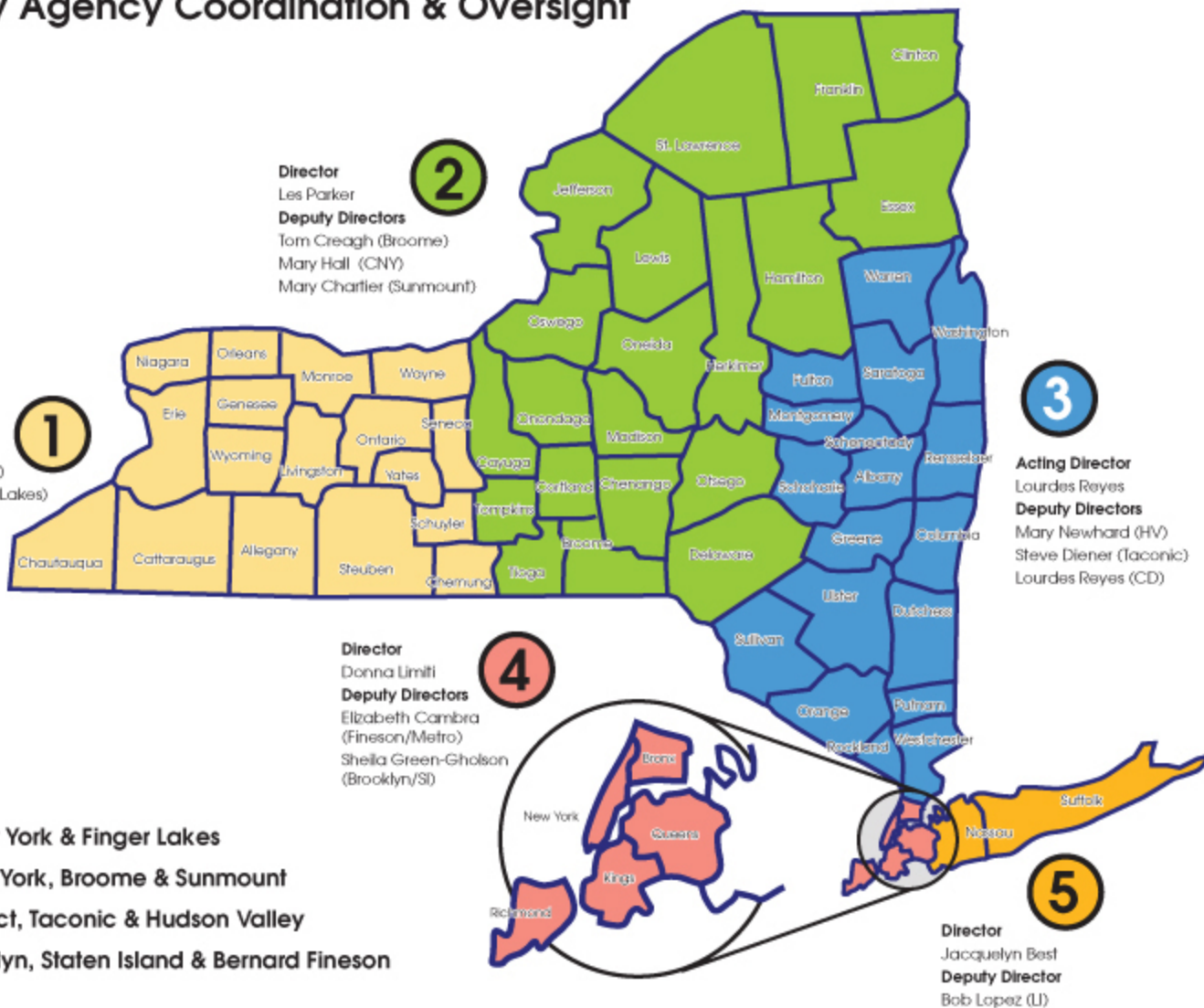
- New Regions
- State Operations vs. Community Support

6 Developmental Disabilities State Operations Offices



5 Developmental Disabilities Regional Offices

Voluntary Agency Coordination & Oversight



OPWDD Restructuring

- New Regions
- State Operations vs. Community Support
- Closures/Census Run Down
- Repurposing State Staff

Systems Transformation

- Front Door
- Eligibility Determination, Assessment and Authorization (EAA) process for accessing:
- Individual and Community Supports (ICS)
- Plan for Self-Directed Services, Agency Purchased or Combination of the two

Systems Transformation & Other Initiatives

- Managed Care-Case Studies, Pilot DISCOs, voluntary enrollment
- **START** (Systemic, Therapeutic Assessment, Respite & Treatment)
- Workshop Enrollment End
- Self Direction
- And More!

Vacancy Management (what we've heard so far....)

- Will be managed through Regional Offices
- Manage not only external placements but also internal moves
- Reserve the right to manage internal movement in order to meet the needs of “Priority I” individuals
- Considering a “single access” committee in each region
- Past practice of expecting retroactive reimbursement is over

Next Steps

- Building support for LGU role with state officials, regional offices and advocates
- OPWDD/LGU communication (email list serves)
- Regional Meetings
 - State & community groups
- CLMHD DD-membership
- Monthly calls
- LGU presence on state workgroups

Continue Focus on.....

- Create Partnership/Collaboration
 - Establish regular meetings with key OPWDD Deputy Commissioners
 - Dialogue on impact of initiatives on LGU & how LGU can be helpful
- Front Door
- DISCOs
- Define LGU Roles in system redesign
- START (Systemic, Therapeutic Assessment, Respite & Treatment)
- Closures/Census Run Down
- Eligibility